

The background is black with vibrant, multi-colored splatters in shades of red, orange, yellow, green, and blue. In the center, there are four stylized silhouettes of athletes in motion: a runner on the left, a hockey player in the middle, and two basketball players on the right. Overlaid on these silhouettes is the brand name "BRUTE" in a large, bold, italicized font. The letters are white with a thick blue outline and a thinner red outline, giving it a 3D, metallic appearance.

BRUTE

ATHLETIC APPAREL

2022 - 2023 CATALOG

SPORTS

BASKETBALL
4-11

WRESTLING
12-21

FOOTBALL
24-27

BASEBALL
28-31

SOFTBALL
32-37

SOCCER
38-45

LACROSSE
46-53

TRACK & FIELD
54-57

HOCKEY
58-61

FIELD HOCKEY
62-65

VOLLEYBALL
66-69

TRAINING
70-77

DETAILS
78-79

HOW TO ORDER
80

WHO ARE WE?

For over 50 years, Brute staked its reputation on three factors. First was quality – both of product and service. Second was reliability, with an emphasis on industry-beating turn times for art and production. Third was the fact our products are designed, printed, and sewn exclusively in the USA.

Three simple ingredients, one incredible little company.

When I acquired Brute in the fall of 2019, it was with the understanding that every forward step would be shaped by these ideals. The first of those steps may already be apparent if you're reading this: we are now Brute Athletic Apparel. While our guiding principles remain the same, it was past time to make it clear we serve multiple sports and promotional needs across all ages, genders, and levels of play. From AAU to rec leagues, from elementary to high school to college – Brute Athletic Apparel proudly offers custom uniforms for everyone.

Our new look is complemented by the introduction of new sports and lines of apparel, from ice hockey to volleyball to accessories like headbands and towels. One of the primary inspirations for our widening breadth of products was awareness that women athletes had relatively few options for custom uniforms; many simply ordered smaller men's uniforms. To this point, this catalogue marks the introduction of our Athena line featuring elite uniforms made specifically for women in sports. Inspired by a vast pantheon of mythological female warriors, our Athena line emphasizes unique fits and comfort for female athletes of all size and is governed by the simple fact that "women are not small men™".

New look, new lines, same passion for exceptionally made custom sublimated apparel. The Athena line shares more than Brute's building and staff: it shares a deep appreciation for quality, reliability, and domestically made products. Much of what you'll see here speaks to that: we're still the fastest when it comes to art and product turn times; our minimums are the most accommodating; and our products are wear-tested by local teams and made to last. Most importantly, our experienced customer service reps, artists, and production crew maintain their commitment to helping your team transition their ideas to reality.

As Brute continues to learn, innovate, and grow, it is with a profound appreciation for the journey that brought us here and your continued partnership. On behalf of the entire Brute Athletic Apparel team, thank you for everything. We look forward to many more years together.

-Michelle M. Pharand
Owner and President
Brute Athletic Apparel

CUSTOMIZE YOUR APPAREL

STEP 1: SPORTS

Begin your order by flipping to the first page of your sport. Refer to the table of contents on page 2.

STEP 2: CUTS

Decide upon a garment from your sport's section.

STEP 3: STYLES

Immediately after cuts you'll find a styles page for your sport. Choose from a variety of templates for your garment.

STEP 4: DETAILS

Pages 78-79 can be referenced for decorating your apparel and selecting a fabric.

STEP 5: ORDER

If you've followed the previous steps, you have everything you need to place an order!

Your cut is your garment – the article of clothing on which Brute prints your custom artwork. Brute cuts range from youth sizes YXS-YXL and adult sizes XS-4XL unless otherwise specified.

MEN'S BASKETBALL

TOPS



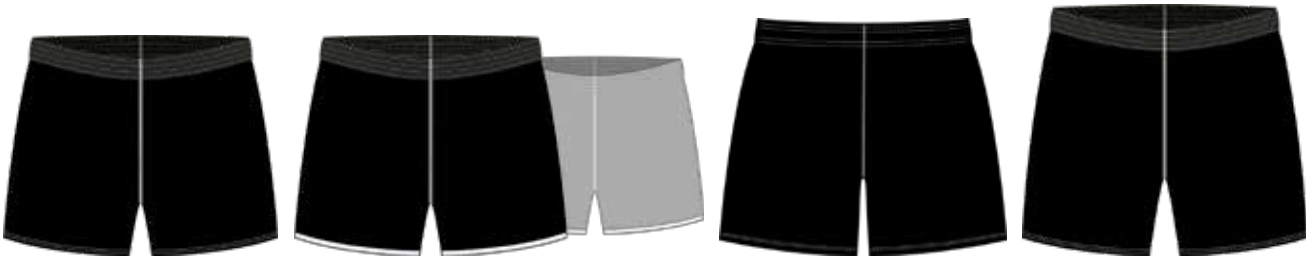
Name	Game Jersey	Game Jersey	Game Jersey	Classic Jersey
SKU	513.6501	513.6501R	513.6511	513.6521
Cut	Single-Side	Reversible	Single-Side	Single-Side
Neck	V-Neck	Crew	Crew	Crew
Binding	Neck	Neck, Arms, Waist	None	None
Fabric	evoGame, Flexmesh, MicroWic Lite, UltraLite	CPStex, evoGame	evoGame, Flexmesh, MicroWic Lite, UltraLite	evoGame, Flexmesh, MicroWic Lite, UltraLite



Raglan Short Sleeve Shirt	Raglan Long Sleeve Shirt	Hooded Shooting Shirt*
514.3001	514.2901	515.3932
Single-Side	Single-Side	Single-Side
Crew	Crew	Hooded
None	None	None
evoGame, MicroWic Lite, UltraLite	evoGame, MicroWic Lite, UltraLite	MicroWic Lite, UltraLite

*Also available in:
short sleeves - 514.0901
sleeveless - 514.0701

BOTTOMS



Name	Semi-Fit Short	Semi-Fit Short	Game Short	Semi-Fit Short
SKU	513.0306	513.0306R	535.1001	513.0308
Cut	Single-Side	Reversible	Single-Side	Reversible
Inseam	6"	6"	7"	8"
Binding	None	Legs	None	None
Fabric	evoGame, Flexmesh, MicroWic Lite, UltraLite	CPStex, evoGame	evoGame, Flexmesh, MicroWic Lite, UltraLite	evoGame, Flexmesh, MicroWic Lite, UltraLite



Game Short	Semi-Fit Short	Game Short	Game Short
535.0701R	513.0308R	535.1201	535.1701R
Reversible	Single-Side	Reversible	Reversible
8"	9"	10"	10"
Legs	None	Legs	Legs
CPStex, evoGame	evoGame, Flexmesh, MicroWic Lite, UltraLite	CPStex, evoGame	CPStex, evoGame

STYLES

Styles are stock artwork templates you can customize and apply to your uniform. Don't forget you can go fully custom, too! Our team of in-house artists is here to make your ideas a reality.

MEN'S BASKETBALL

52 BASELINE



53 CROSSOVER



189 SLASHER



190 FLEX



94 GOLDEN EAGLE



165 FASTBREAK



197 FORTIFY



202 DASH



WANT SOMETHING TRULY UNIQUE?

No problem! Contact your dealer with ideas and reference images of the design you want.

Your cut is your garment – the article of clothing on which Brute prints your custom artwork. Athena cuts range from youth sizes YXS-YL and adult sizes XS-4XL unless otherwise specified.

ATHENA BASKETBALL

Brute's Elite Fit for Women

TOPS

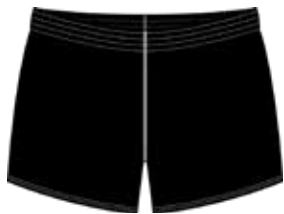


Name	Fitted Jersey	Loose Fit Jersey	Fitted Jersey	Loose Fit Jersey	Fitted Jersey	Loose Fit Jersey
SKU	1522.0710	1525.0710	1522.071R	1525.071R	1522.0711	1525.0711
Cut	Single-Side		Reversible		Single-Side	
Neck	Scoop Neck		Scoop Neck		V-Neck	
Binding	None		Neck, Arms, Waist		Neck	
Fabric	CPStex		CPStex		CPStex	



Shooting Shirt	Hooded Shooting Shirt
1525.0912	1525.0913
Single-Side	Single-Side
Collared	Hooded
None	None
MicroWic Lite, UltraLite	MicroWic Lite, UltraLite

BOTTOMS



Name	Fitted Short	Loose Fit Short	Fitted Short	Loose Fit Short
SKU	1523.0304	1525.0304	1523.034R	1525.034R
Cut	Single-Side		Reversible	
Inseam	4"		4"	
Binding	None		Legs	
Fabric	CPStex		CPStex	



Fitted Short	Loose Fit Short	Fitted Short	Loose Fit Short
1523.0306	1525.0306	1523.036R	1525.036R
Single-Side		Reversible	
6"		6"	
None		Legs	
CPStex		CPStex	

STEP 1

STEP 2

STEP 3

STEP 4

STEP 5

STYLES

Styles are stock artwork templates you can customize and apply to your uniform. Don't forget you can go fully custom, too! Our team of in-house artists is here to make your ideas a reality.

52 BASELINE



53 CROSSOVER



189 SLASHER



190 FLEX



94 GOLDEN EAGLE



165 FASTBREAK



197 FORTIFY



202 DASH



WANT SOMETHING TRULY UNIQUE?

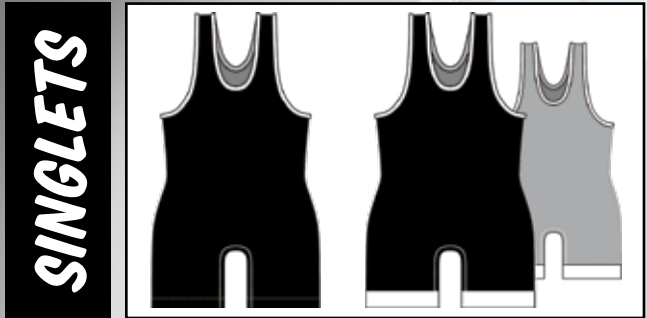
No problem! Contact your dealer with ideas and reference images of the design you want.

ATHENA BASKETBALL

Brute's Elite Fit for Women

ATHENA BASKETBALL

Your cut is your garment – the article of clothing on which Brute prints your custom artwork. Brute cuts range from youth sizes YXS-YXL and adult sizes XS-4XL unless otherwise specified.

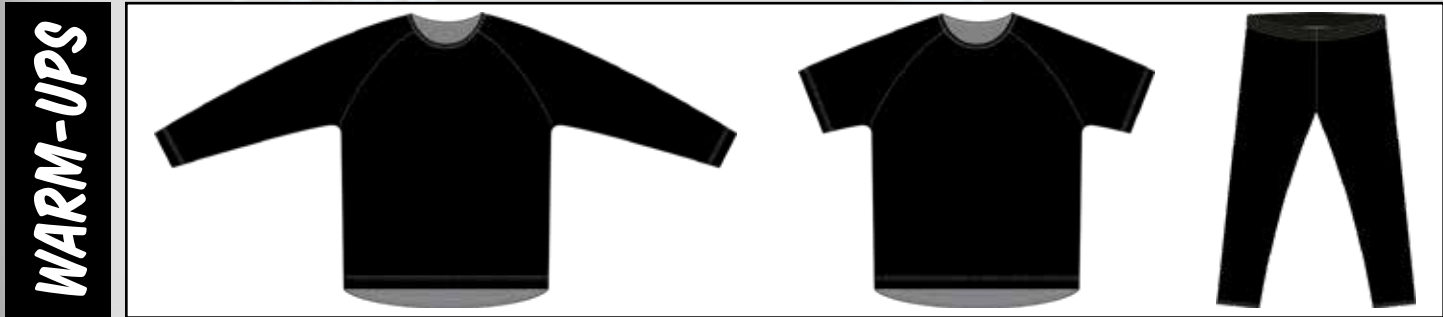


Name	Singlet*	Singlet*
SKU	111.3101	111.3301R
Cut	Single-Side	Reversible
Inseam	Graded	Graded
Binding	Neck, Arms	Neck, Arms
Fabric	CPStex	CPStex

*Available with mock side panels:
singlet - 111.3102
reversible singlet - 111.3302R



Name	Compression Short	Competition Short
SKU	111.1001	113.0702
Cut	Single-Side	Single-Side
Inseam	7"	8"
Binding	None	Vents
Fabric	CPStex	CPStex, ToughFlex

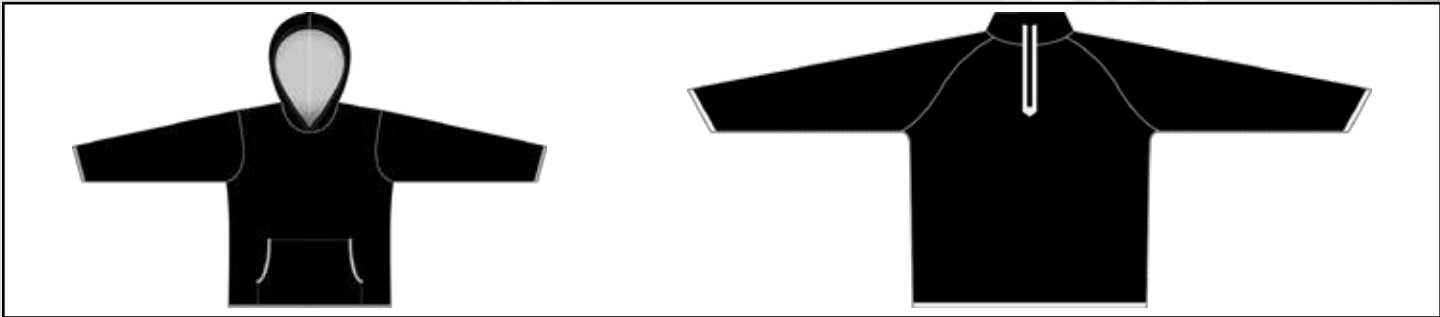


Name	Raglan Long Sleeve Shirt	Raglan Short Sleeve Shirt	Sweatpant*
SKU	114.2901	114.3001	113.0500
Cut	Single-Side	Single-Side	Single-Side
Neck	Crew	Crew	Graded
Binding	None	None	None
Fabric	evoGame, MicroWic Lite, UltraLite	evoGame, MicroWic Lite, UltraLite	Neumatch, UltraLite

*Also available in:
pockets - 113.0510



Name	Sleeveless Compression	Half Sleeve Compression	Short Sleeve Compression
SKU	111.2701	111.2801	111.3001
Cut	Single-Side	Single-Side	Single-Side
Neck	Crew	Crew	Crew
Binding	None	None	None
Fabric	CPStex	CPStex	CPStex



Hoodie	Long Sleeve Quarter-Zip*
114.3933	113.8401
Single-Side	Single-Side
Hooded	Collared
Wrists, Pocket, Waist	Waist, Wrists, Zipper
NeuMatch	NeuMatch, UltraLite

*Also available in:
short sleeves - 115.8404

STYLES

Styles are stock artwork templates you can customize and apply to your uniform. Don't forget you can go fully custom, too! Our team of in-house artists is here to make your ideas a reality.

MEN'S WRESTLING

02 WRANGLER



95 VANISH



186 ANNIHILATE



187 DOMINATE



184 ESCAPE



185 BREAKDOWN



200 BRAWL



201 COMBAT



WANT SOMETHING TRULY UNIQUE?

No problem! Contact your dealer with ideas and reference images of the design you want.

Your cut is your garment – the article of clothing on which Brute prints your custom artwork. Athena cuts range from youth sizes YXS-YL and adult sizes XS-4XL unless otherwise specified.

SINGLES



Name	Singlet*	Reversible Singlet*	Gen. 2 Singlet*
SKU	121.3101	121.3301R	121.3133
Cut	Single-Side	Reversible	Single-Side
Inseam	Graded	Graded	3"
Binding	Neck, Arms	Neck, Arms	Neck, Arms
Fabric	CPStex	CPStex	CPStex

*Mock side panels - 121.3102

*Mock side panels - 121.3302R

*Mock side panels - 121.3333



Gen. 2 Singlet*	Gen. 2 Singlet*	Gen. 2 Singlet*
121.3155R	121.3155	121.3177R
Reversible	Single-Side	Reversible
5"	5"	7"
Neck, Arms	Neck, Arms	Neck, Arms
CPStex	CPStex	CPStex

*Mock side panels - 121.335R

*Mock side panels - 121.3355

*Mock side panels - 121.337R

TOPS





Name	Sleeveless Compression	Half Sleeve Compression	Short Sleeve Compression
SKU	121.2701	121.2801	121.3001
Cut	Single-Side	Single-Side	Single-Side
Neck	V-Neck	V-Neck	V-Neck
Binding	Neck	Neck	Neck
Fabric	CPStex	CPStex	CPStex

BOTTOMS





Name	Compression Short	Compression Short
SKU	121.0301	121.0501
Cut	Single-Side	Single-Side
Inseam	3"	5"
Binding	None	None
Fabric	CPStex	CPStex

WARM-UPS



Name	Raglan Long Sleeve Shirt	Raglan Short Sleeve Shirt
SKU	124.2901	124.3001
Cut	Single-Side	Single-Side
Neck	V-Neck	V-Neck
Binding	Neck	Neck
Fabric	CPMtex, evoGame, MicroWic Lite, UltraLite	CPMtex, evoGame, MicroWic Lite, UltraLite




Fitted Quarter-Zip*	Loose Fit Quarter-Zip*
1923.1102	1925.1102
Single-Side	Single-Side
Collared	Collared
Waist, Wrist, Zipper	Waist, Wrist, Zipper
CPStex	CPStex

*Use the standard Athena size chart when determining size.


*Use the standard Athena size chart when determining size.

HEADGEAR



Name	Headgear Cover
SKU	131.0102
Sizes	Small - 21½", Medium - 22½", Large - 23½"
Binding	Rim
Fabric	CPStex
Compatible with Danmar Hair Nets	

HOODIE



Name	Hoodie*
SKU	1925.1101
Cut	Single-Side
Neck	Hooded
Binding	Wrists, Pocket, Waist
Fabric	CPStex

*Use the standard Athena size chart when determining size.

STYLES

Styles are stock artwork templates you can customize and apply to your uniform. Don't forget you can go fully custom, too! Our team of in-house artists is here to make your ideas a reality.

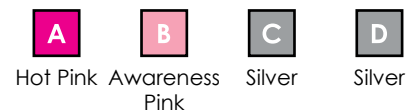
ATHENA WRESTLING

Brute's Elite Fit for Women

02 WRANGLER



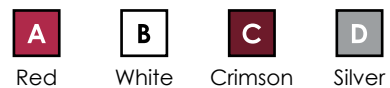
COLORS



95 VANISH



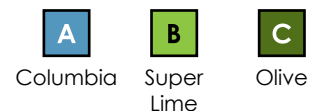
COLORS



186 ANNIHILATE



COLORS



187 DOMINATE



COLORS



184 ESCAPE



COLORS



185 BREAKDOWN



COLORS



200 BRAWL



COLORS



201 COMBAT



COLORS



WANT SOMETHING TRULY UNIQUE?

No problem! Contact your dealer with ideas and reference images of the design you want.

Team Store

Item	Description
913.0910	MEN'S SHORT SLEEVE FLEX JERSEY
1925.0910	WOMEN'S SHORT SLEEVE TECH TEE
913.0912	MEN'S LONG SLEEVE FLEX JERSEY
1925.0912	WOMEN'S LONG SLEEVE TECH TEE
914.3933	MEN'S HOODIE
1925.1101	WOMEN'S HOODIE
913.8401	MEN'S Q-ZIP
1925.1102	WOMEN'S Q-ZIP
1922.0501	SPORTS BRA
731.0124	HEADBAND
9DP.1726	BLANKET (50" X 60")
9BP.1529	BEACH TOWEL (30" X 60")
9EP.S301	SCARF (8" X 55")
9EP.1528	GOLF TOWEL (15" X 25")
9EP.1527	RALLY TOWEL (11" X 18")



Rep your team with
SWAG



CREATED YOUR WAY
BRUTE'S UNIFORM CUSTOMIZER WWW.BRUTE.COM



Text: Chest

WOLVES

Text Font

House of Cards

Aa Aa Aa Aa Aa AA

Logo

☒ Chest

☐ Back

☐ Right Sleeve

☐ Left Sleeve

- CHOOSE A STYLE
- ADD YOUR COLORS AND LOGOS
- CREATE YOUR CUSTOM UNIFORMS!

BASKETBALL, FOOTBALL, AND WRESTLING AVAILABLE ONLINE NOW!

Your cut is your garment – the article of clothing on which Brute prints your custom artwork. Brute cuts range from youth sizes YXS-YXL and adult sizes XS-4XL unless otherwise specified.

TOPS



Name	Football Jersey	Sleeveless Compression	Half Sleeve Compression
SKU	813.3803	811.2701	811.2801
Cut	Single-Side	Single-Side	Single-Side
Neck	V-Neck	Crew	Crew
Binding	Neck, Waist	None	None
Fabric	Duragame, Duragame w/Mesh, Duragame w/FlexMesh	CPStex	CPStex

FAN GEAR



Name	Short Sleeve Compression	Name	Set-in Short Sleeve Shirt	Short Sleeve Flex
SKU	811.3001	SKU	814.4011	813.0910
Cut	Single-Side	Cut	Single-Side	Single-Side
Neck	Crew	Neck	V-Neck	Collared
Binding	None	Binding	Neck	None
Fabric	CPStex	Fabric	evoGame, FlexMesh MicroWic Lite, UltraLite	evoGame, FlexMesh MicroWic Lite, UltraLite

BOTTOMS



Name	Game Short	Game Short
SKU	835.1001	835.1201
Cut	Single-Side	Single-Side
Inseam	7"	9"
Binding	None	None
Fabric	evoGame, MicroWic Lite, UltraLite	evoGame, MicroWic Lite, UltraLite

STYLES

Styles are stock artwork templates you can customize and apply to your uniform. Don't forget you can go fully custom, too! Our team of in-house artists is here to make your ideas a reality.

MEN'S FOOTBALL

205 STAMPEDE



207 JUKE



206 CONQUER



234 PLATOON



WANT SOMETHING TRULY UNIQUE?

No problem! Contact your dealer with ideas and reference images of the design you want.

Your cut is your garment – the article of clothing on which Brute prints your custom artwork. Brute cuts range from youth sizes YXS-YXL and adult sizes XS-4XL unless otherwise specified.

TOPS



Name	Sleeveless Jersey	Raglan Short Sleeve Jersey	Raglan Short Sleeve Jersey
SKU	314.2701	314.3001	314.3011
Cut	Single-Side	Single-Side	Single-Side
Neck	Crew	Crew	V-Neck
Binding	None	None	Neck
Fabric	evoGame, Flexmesh, MicroWic Lite, UltraLite	evoGame, Flexmesh, MicroWic Lite, UltraLite	evoGame, Flexmesh, MicroWic Lite, UltraLite

TOPS



Name	2-Button Jersey	Sleeveless Full Button Jersey	Short Sleeve Full Button Jersey
SKU	314.1626	314.2707	314.1607
Cut	Single-Side	Single-Side	Single-Side
Neck	Buttoned	Buttoned	Buttoned
Binding	None	None	None
Fabric	evoGame, Flexmesh, MicroWic Lite, UltraLite	evoGame, Flexmesh, MicroWic Lite, UltraLite	evoGame, Flexmesh, MicroWic Lite, UltraLite



Raglan Short Sleeve Jersey	Set-in Short Sleeve Jersey	Set-in Short Sleeve Jersey
314.3001R	314.4001	314.4011
Reversible	Single-Side	Single-Side
Crew	Crew	V-Neck
Neck, Arms, Waist	None	Neck
evoGame	evoGame, FlexMesh, MicroWic Lite, UltraLite	evoGame, FlexMesh, MicroWic Lite, UltraLite



Short Sleeve Flex
313.0910
Single-Side
Collared
None
evoGame, FlexMesh, MicroWic Lite, UltraLite

CAGE JACKET



Name	Short Sleeve Quarter-Zip
SKU	315.8404
Cut	Single-Side
Neck	Collared
Binding	Zipper
Fabric	NeuMatch, ToughFlex, UltraLite

*Also available in:
long sleeves - 313.8401

STEP 1

STEP 2

STEP 3

STEP 4

STEP 5

STYLES

Styles are stock artwork templates you can customize and apply to your uniform. Don't forget you can go fully custom, too! Our team of in-house artists is here to make your ideas a reality.

BASEBALL

170 LAUNCH

COLORS

A

B

C

Light Silver

White

Royal

171 STEAL

COLORS

A

B

C

Navy

Scarlet

White

188 CLOSER

COLORS

A

B

C

Athletic Gold

Orange

Scarlet

194 PROLINE

COLORS

A

B

Red

White

173 CHAMPION

COLORS

A

B

C

White

Athletic Gold

Athletic Gold

174 RIVAL

COLORS

A

B

C

Slate

Navy

White

194 PROLINE (ALT)

COLORS

A

B

Black

Vegas Gold

235 HARDBALL

COLORS

A

B

Scarlet

White

WANT SOMETHING TRULY UNIQUE?
No problem! Contact your dealer with ideas and reference images of the design you want.

30

31

BASEBALL

Your cut is your garment – the article of clothing on which Brute prints your custom artwork. Athena cuts range from youth sizes YXS-YL and adult sizes XS-4XL unless otherwise specified.

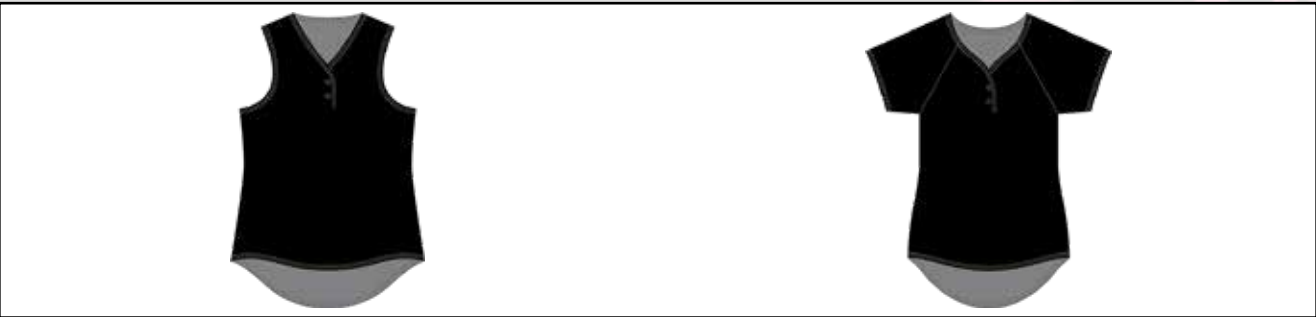
TOPS



Name	Fitted Sleeveless Jersey	Loose Fit Sleeveless Jersey	Fitted Racerback*	Loose Fit Racerback*	Fitted Short Sleeve Jersey	Loose Fit Short Sleeve Jersey
SKU	1322.0711	1325.0711	1322.1311	1325.1311	1322.1911	1325.1911
Cut	Single-Side		Single-Side		Single-Side	
Neck	V-Neck		V-Neck		V-Neck	
Binding	Neck		Neck		Neck	
Fabric	MicroWic Lite		MicroWic Lite		MicroWic Lite	

*Player names are not recommended for this cut.

BUTTON-TOPS



Name	Fitted 2-Button Vest	Loose Fit 2-Button Vest	Fitted 2-Button Short Sleeve Jersey	Loose Fit 2-Button Short Sleeve Jersey
SKU	1322.0712	1325.0712	1322.1912	1325.1912
Cut	Single-Side		Single-Side	
Neck	Buttoned		Buttoned	
Binding	None		None	
Fabric	MicroWic Lite		MicroWic Lite	

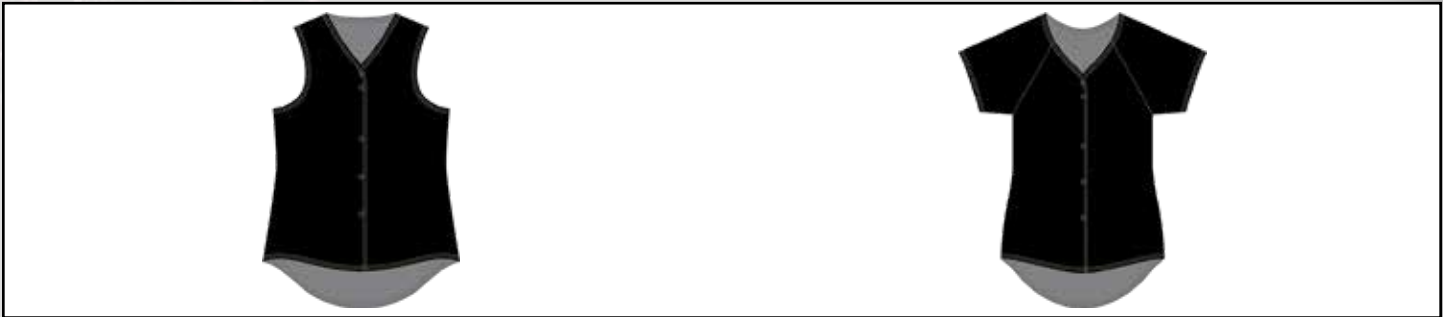
ATHENA SOFTBALL

Brute's Elite Fit for Women



Fitted Sleeveless Jersey	Loose Fit Sleeveless Jersey	Fitted Racerback*	Loose Fit Racerback*
1322.071R	1325.071R	1322.131R	1325.131R
Reversible		Reversible	
Scoop Neck		Scoop Neck	
Neck, Arms, Waist		Neck, Arms, Waist	
evoGame		evoGame	

*Player names are not recommended for this cut.



Fitted Full Faux Button Vest	Loose Fit Full Faux Button Vest	Fitted Full Faux Button Short Sleeve Jersey	Loose Fit Full Faux Button Short Sleeve Jersey
1322.0713	1325.0713	1322.1914	1325.1914
Single-Side		Single-Side	
Buttoned		Buttoned	
None		None	
MicroWic Lite		MicroWic Lite	

CUTS

Your cut is your garment – the article of clothing on which Brute prints your custom artwork. Athena cuts range from youth sizes YXS-YL and adult sizes XS-4XL unless otherwise specified.

PRO-FIT*



Name	Fitted Short Sleeve Jersey	Loose Fit Short Sleeve Jersey	Fitted 2-Button Short Sleeve Jersey	Loose Fit 2-Button Short Sleeve Jersey	Fitted Full Faux Button Short Sleeve Jersey	Loose Fit Full Faux Button Short Sleeve Jersey
SKU	1322.0911	1325.0911	1322.0912	1325.0912	1322.0914	1325.0914
Cut	Single-Side		Single-Side		Single-Side	
Neck	V-Neck		Buttoned		Buttoned	
Binding	Neck		None		None	
Fabric	MicroWic Lite w/ Flex Mesh		MicroWic Lite w/ Flex Mesh		MicroWic Lite w/ Flex Mesh	

*Only available in adult sizes.

WARM-UPS



EXTRAS



Name	Fitted Quarter-Zip	Loose Fit Quarter-Zip	Name	Loop Headband
SKU	1323.1102	1325.1102	SKU	331.0124
Cut	Single-Side		Cut	Single-Side
Neck	Collared		Sizes	One Size
Binding	Wrist, Waist, Zipper		Binding	None
Fabric	CPStex		Fabric	CPStex

Athena Softball PRO-FIT SERIES



239-FASTBALL
ATHENA FULL BUTTON
1322.0914



242-BASERUNNER
ATHENA V-NECK
1322.0911



241-BACKSTOP
ATHENA 2 BUTTON
1322.0912



240-HOMERUN
ATHENA 2 BUTTON
1322.0912

Available in Fitted & Loose options

The Pro-Fit Series is designed with contoured side panels on fitted and loose fit jerseys.

The contoured panels enable each athlete to have increased movement and comfort in the fit they enjoy playing in.

Pro-Fit Series jerseys are only available for adult sizes XS - 4XL.

STYLES

Styles are stock artwork templates you can customize and apply to your uniform. Don't forget you can go fully custom, too! Our team of in-house artists is here to make your ideas a reality.

170 LAUNCH



Front



Back

COLORS



Black



Royal



White



171 STEAL



Front



Back

COLORS



Black

Athletic
Gold

White



188 CLOSER



Front



Back

COLORS



White

Columbia
Charcoal

194 PROLINE



Front



Back

COLORS



Navy



Columbia



173 CHAMPION



Front



Back

COLORS



Scarlet



White



White



174 RIVAL



Front



Back

COLORS



Kelly

Athletic
Gold

White



194 PROLINE (ALT)



Front



Back

COLORS



Black

Vegas
Gold

235 HARDBALL



Front



Back

COLORS



White



Scarlet



WANT SOMETHING TRULY UNIQUE?

No problem! Contact your dealer with ideas and reference images of the design you want.

ATHENA SOFTBALL

Brute's Elite Fit for Women

Your cut is your garment – the article of clothing on which Brute prints your custom artwork. Brute cuts range from youth sizes YXS-YXL and adult sizes XS-4XL unless otherwise specified.

TOPS



Name	Semi-Fit Jersey	Semi-Fit Jersey
SKU	213.1608	213.1612
Cut	Single-Side	Single-Side
Neck	Laker Neck	Crew
Binding	None	None
Fabric	evoGame, MicroWic Lite, UltraLite	evoGame, MicroWic Lite, UltraLite



Semi-Fit Jersey	Short Sleeve Flex
213.1612R	213.0910
Reversible	Single-Side
Crew	Collared
Neck, Arms, Waist	None
evoGame	evoGame, FlexMesh MicroWic Lite, UltraLite

BOTTOMS



Name	Semi-Fit Short	Semi-Fit Short	Training Short*	Pocket Sweatpant
SKU	213.0306	213.0306R	213.0901	213.0510
Cut	Single-Side	Reversible	Single-Side	Single-Side
Inseam	6"	6"	6"	Graded
Binding	None	Legs	None	None
Fabric	evoGame, Flexmesh, MicroWic Lite, UltraLite	evoGame	ToughFlex w/ FlexMesh	Neumatch, UltraLite

*Semi-Fit w/ Pockets

WARM-UPS



Name	Long Sleeve Quarter-Zip	Hoodie
SKU	213.8401	214.3933
Cut	Single-Side	Single-Side
Neck	Collared	Hooded
Binding	Wrist, Waist, Zipper	Wrists, Pocket, Waist
Fabric	NeuMatch, UltraLite	NeuMatch

*Also available in:
short sleeves - 215.8404

STYLES

Styles are stock artwork templates you can customize and apply to your uniform. Don't forget you can go fully custom, too! Our team of in-house artists is here to make your ideas a reality.

MEN'S SOCCER

191 HORIZON



192 UNLEASHED



211 WINGER



193 FLY



196 IGNITE



236 ATTACK



WANT SOMETHING TRULY UNIQUE?

No problem! Contact your dealer with ideas and reference images of the design you want.

Your cut is your garment – the article of clothing on which Brute prints your custom artwork. Athena cuts range from youth sizes YXS-YL and adult sizes XS-4XL unless otherwise specified.

ATHENA SOCCER

Brute's Elite Fit for Women

TOPS

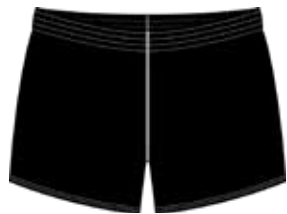


Name	Fitted Jersey	Loose Fit Jersey	Fitted Jersey	Loose Fit Jersey
SKU	1222.0908	1225.0908	1222.098R	1225.098R
Cut	Single-Side		Reversible	
Neck	Laker Neck		Crew	
Binding	None		Neck, Arms, Waist	
Fabric	CPMtex, MicroWic Lite		CPMtex	



Fitted Tech Tee	Loose Fit Tech Tee	Loose Fit Jersey
1222.0910	1225.0910	1225.0912
Single-Side		Single-Side
Scoop Neck		Collared
Neck		Neck, Arms, Waist
CPMtex		CPMtex, MicroWic Lite

BOTTOMS



Name	Fitted Short	Loose Fit Short	Fitted Short	Loose Fit Short
SKU	1223.0304	1225.0304	1223.034R	1225.034R
Cut	Single-Side		Reversible	
Inseam	4"		4"	
Binding	None		Legs	
Fabric	CPMtex, MicroWic Lite		CPMtex	



Fitted Short	Loose Fit Short	Fitted Short	Loose Fit Short
1223.0306	1225.0306	1223.036R	1225.036R
Single-Side		Reversible	
6"		6"	
None		Legs	
CPMtex, MicroWic Lite		CPMtex	

191 HORIZON

Front

Back

Front

Back

COLORS

A

B

C

Purple

Light Purple

Violet

193 FLY

Front

Back

Front

Back

COLORS

A

B

C

Tan

Texas Orange

Brown

196 IGNITE

Front

Back

Front

Back

COLORS

A

B

C

White

Scarlet

Tangerine

192 UNLEASHED

Front

Back

Front

Back

COLORS

A

B

C

Cyan

Baby Blue

White

211 WINGER

Front

Back

Front

Back

COLORS

A

B

C

Black

White

Athletic Gold

236 ATTACK

Front

Back

Front

Back

COLORS

A


B

Grass

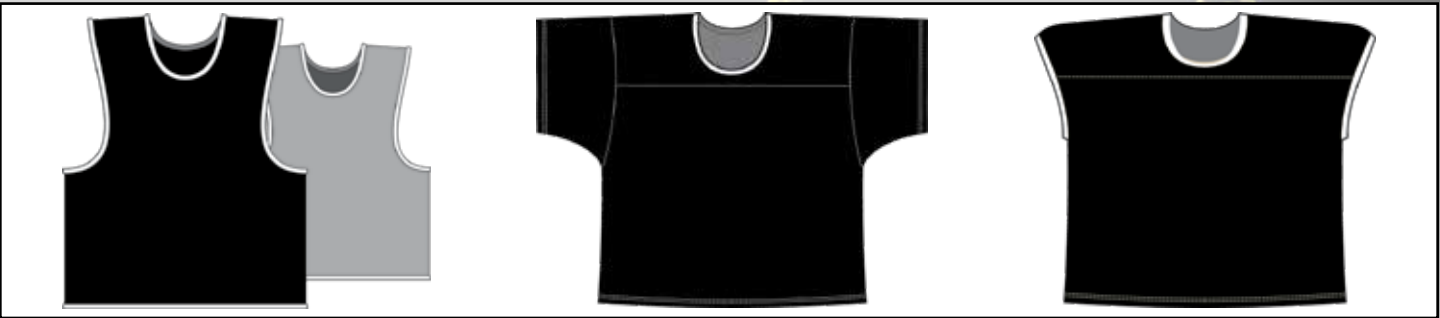
Black

WANT SOMETHING TRULY UNIQUE?
No problem! Contact your dealer with ideas and reference images of the design you want.

TOPS




Name	Pinnie	Pinnie	Wide Strap Pinnie
SKU	715.1901	715.1901R	715.1921
Cut	Single-Side	Reversible	Single-Side
Neck	Crew	Crew	Crew
Binding	None	Neck, Arms, Waist	None
Fabric	evoGame, MicroWic Game	evoGame	evoGame, MicroWic Game



Wide Strap Pinnie	Game Jersey	Cap Sleeve Jersey
715.1921R	715.3701	715.3703
Reversible	Single-Side	Single-Side
Crew	Crew	Crew
Neck, Arms, Waist	Neck	Neck, Arms
evoGame	evoGame, MicroWic Game	evoGame, MicroWic Game

BOTTOMS



Name	Training Short*	Game Short	Game Short
SKU	713.0901	735.1001	735.0701R
Cut	Single-Side	Single-Side	Reversible
Inseam	6"	7"	8"
Binding	None	None	Legs
Fabric	ToughFlex w/ FlexMesh	evoGame, MicroWic Game	evoGame

*Semi-Fit w/ Pockets



Game Short	Game Short
735.1201	735.1701R
Single-Side	Reversible
9"	10"
None	Legs
evoGame, MicroWic Game	evoGame

STYLES

Styles are stock artwork templates you can customize and apply to your uniform. Don't forget you can go fully custom, too! Our team of in-house artists is here to make your ideas a reality.

56 CONQUEST



57 STRIKE



67 SURGE



68 SNIPER



167 PRIMARY



MEN'S LACROSSE


WANT SOMETHING TRULY UNIQUE?

No problem! Contact your dealer with ideas and reference images of the design you want.


ATHENA LACROSSE

Brute's Elite Fit for Women

TOPS




Name	Fitted Sleeveless	Loose Fit Sleeveless	Fitted Sleeveless	Loose Fit Sleeveless	Fitted Racerback	Loose Fit Racerback	Fitted Racerback	Loose Fit Racerback
SKU	1722.0711	1725.0711	1722.071R	1725.071R	1722.1311	1725.1311	1722.131R	1725.131R
Cut	Single-Side		Reversible		Single-Side		Reversible	
Neck	V-Neck		Scoop Neck		V-Neck		Scoop Neck	
Binding	Neck		Neck, Arms, Waist		Neck		Neck, Arms, Waist	
Fabric	CPMtex, CPStex		CPMtex, CPStex		CPMtex, CPStex		CPMtex, CPStex	



Fitted Short Sleeve Jersey	Loose Fit Short Sleeve Jersey	Fitted Square Neck	Loose Fit Square Neck	Fitted Cap Sleeve	Loose Fit Cap Sleeve	Cap Sleeve Goalie Jersey
1722.0911	1725.0911	1722.0914	1725.0914	1722.0800	1725.0800	715.3703
Single-Side		Single-Side		Single-Side		Single-Side
V-Neck		Square Neck		V-Neck		Crew
Neck		Collar		Neck		Neck, Arms
CPMtex, CPStex		CPMtex, CPStex		CPMtex, CPStex		MicroWic Game

BOTTOMS



Name	Hemmed Skirt	Binded Skirt*	Fitted Short	Loose Fit Short
SKU	722.6601H	722.6601B	1723.0304	1725.0304
Cut	Single-Side	Single-Side	Single-Side	
Inseam	Graded	Graded	4"	
Binding	None	Legs	None	
Fabric	CPMtex, CPStex	CPMtex, CPStex	CPMtex, CPStex	

*Also available in:
Reversible - 722.6601R



Fitted Short	Loose Fit Short	Fitted Short	Loose Fit Short	Fitted Short	Loose Fit Short
1723.034R	1725.034R	1723.0306	1725.0306	1723.036R	1725.036R
Reversible		Single-Side		Reversible	
4"		6"		6"	
Legs		None		Legs	
CPMtex, CPStex		CPMtex, CPStex		CPMtex, CPStex	

ATHENA LACROSSE

STEP 1
STYLES

STEP 2

STEP 3

STEP 4

STEP 5

Styles are stock artwork templates you can customize and apply to your uniform. Don't forget you can go fully custom, too! Our team of in-house artists is here to make your ideas a reality.



56 CONQUEST



57 STRIKE



67 SURGE



68 SNIPER



167 PRIMARY



WANT SOMETHING TRULY UNIQUE?


No problem! Contact your dealer with ideas and reference images of the design you want.

ATHENA LACROSSE

Brute's Elite Fit for Women




ATHENA LACROSSE

TOPS



Name	Sleeveless Tank
SKU	413.1901
Cut	Single-Side
Neck	Crew
Binding	None
Fabric	UltraLite

BOTTOMS



Name	Game Short	Compression Short	Sweatpant*
SKU	435.0301	411.1001	413.0500
Cut	Single-Side	Single-Side	Single-Side
Inseam	3"	7"	Graded
Binding	None	None	None
Fabric	UltraLite	CPStex	Neumatch, Ultralite

*Also available in:
pockets - 413.0510



MEN'S TRACK & FIELD

208 SPRINT



FrontBackFrontBack

COLORS

ABlack

BScarlet

CWhite



209 RACE



FrontBackFrontBack

COLORS

ARoyal

BWhite

CBaby Blue



210 MARATHON



FrontBackFrontBack

COLORS

AKelly

BSilver

CWhite



WANT SOMETHING TRULY UNIQUE?

No problem! Contact your dealer with ideas and reference images of the design you want.

STYLES

Styles are stock artwork templates you can customize and apply to your uniform. Don't forget you can go fully custom, too! Our team of in-house artists is here to make your ideas a reality.

Your cut is your garment – the article of clothing on which Brute prints your custom artwork. Athena cuts range from youth sizes YXS-YL and adult sizes XS-4XL unless otherwise specified.

TOPS



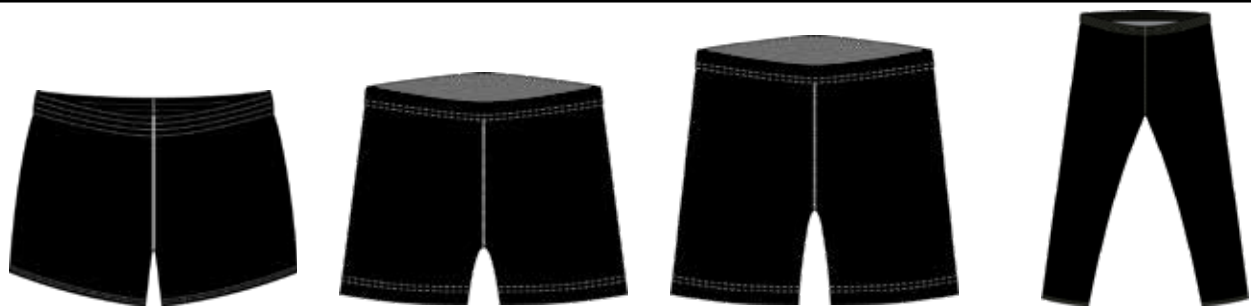
BRAS



Name	Fitted Racerback	Loose Racerback
SKU	1422.1311	1425.1311
Cut	Single-Side	
Neck	Crew	
Binding	None	
Fabric	UltraLite	

Name	Sports Bra
SKU	1422.0501
Cut	Single-Side
Support	Medium
Binding	Neck, Arms
Fabric	CPStex

BOTTOMS



Name	Loose Short	Compression Short	Compression Short	Fitted Sweatpant*	Loose Fit Sweatpant*
SKU	1425.0303	1421.0301	1421.0501	1422.0311	1425.0311
Cut	Single-Side	Single-Side	Single-Side	Single-Side	
Inseam	3"	3"	5"	Graded	
Binding	None	None	None	None	
Fabric	Ultralite	CPStex	CPStex	CPStex	

*Also available w/pockets:
Fitted - 1422.0321
Loose Fit - 1425.0321

ATHENA TRACK & FIELD



208 SPRINT



COLORS

A

Scarlet

B

Black

C

Silver



209 RACE



COLORS

A

Athletic Gold

B

Royal

C

White



210 MARATHON



COLORS

A

Kelly

B

Silver

C

White



WANT SOMETHING TRULY UNIQUE?
No problem! Contact your dealer with ideas and reference images of the design you want.

STYLES

Styles are stock artwork templates you can customize and apply to your uniform. Don't forget you can go fully custom, too! Our team of in-house artists is here to make your ideas a reality.

Introducing

BRUTE HOCKEY



Looking for a superior fit, flexibility, and durability?

Our new line of hockey jerseys is wear-tested by local teams and designed to accommodate all the essential gear. Choose from our stock styles or go fully custom.



BRUTE HOCKEY

TOPS



Name	Goalie Jersey	Game Jersey
SKU	715.3811	715.3911
Cut	Single-Side	Single-Side
Neck	Collared V-Neck	Collared V-Neck
Binding	None	None
Fabric	DuraGame w/ MicroWic Game, DuraGame	DuraGame w/ MicroWic Game, Duragame

SOCKS



Name	Hockey Socks
SKU	715.0201
Cut	Single-Side
Lengths	20", 22", 24", 26", 28"
Binding	None
Fabric	DuraGame

WARM-UPS



Name	Long Sleeve Quarter-Zip
SKU	713.8401
Cut	Single-Side
Neck	Collared
Binding	Waist, Wrists, Zipper
Fabric	NeuMatch, UltraLite

*Also available in:
short sleeves - 715.8404

CUTS

STEP 1

STEP 2

STEP 3

STEP 4

STEP 5

Your cut is your garment – the article of clothing on which Brute prints your custom artwork. Brute cuts range from youth sizes YXS-YXL and adult sizes XS-4XL unless otherwise specified.

BRUTE HOCKEY

STYLES

Styles are stock artwork templates you can customize and apply to your uniform. Don't forget you can go fully custom, too! Our team of in-house artists is here to make your ideas a reality.

219 BREAKAWAY



220 FACEOFF



223 PANGOLIN



221 NOBLE



222 SLAPSHOT



COMPLIMENT YOUR JERSEY WITH MATCHING SOCKS



BRUTE HOCKEY




WANT SOMETHING TRULY UNIQUE?

No problem! Contact your dealer with ideas and reference images of the design you want.


ATHENA FIELD HOCKEY

Brute's Elite Fit for Women

TOPS

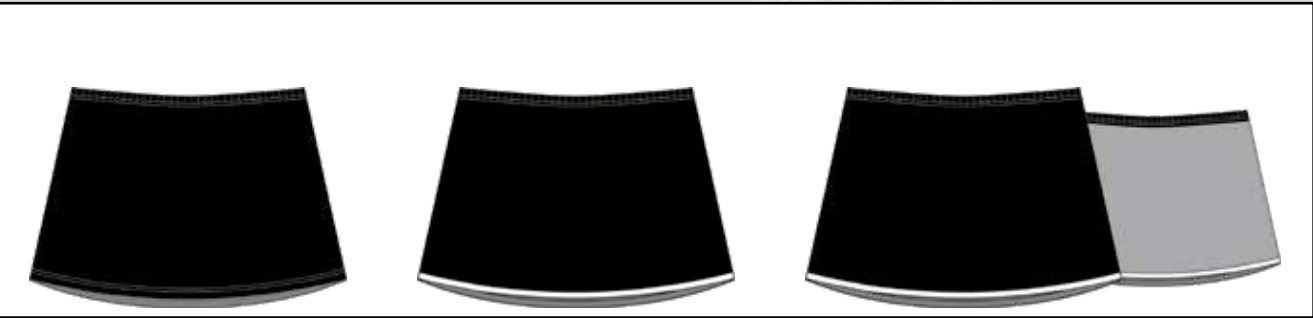


Name	Fitted Sleeveless	Loose Fit Sleeveless	Fitted Sleeveless	Loose Fit Sleeveless	Fitted Racerback	Loose Fit Racerback
SKU	1722.0711	1725.0711	1722.071R	1725.071R	1722.1311	1725.1311
Cut	Single-Side		Reversible		Single-Side	
Neck	V-Neck		Scoop Neck		V-Neck	
Binding	Neck		Neck, Arms, Waist		Neck	
Fabric	CPMtex, CPStex		CPMtex, CPStex		CPMtex, CPStex	




Fitted Racerback	Loose Fit Racerback	Fitted Cap Sleeve	Loose Fit Cap Sleeve	Cap Sleeve Goalie Jersey
1722.131R	1725.131R	1722.0800	1725.0800	715.3703
Reversible		Single-Side		Single-Side
Scoop Neck		V-Neck		Crew
Neck, Arms, Waist		Neck		Neck, Arms
CPMtex, CPStex		CPMtex, CPStex		MicroWic Game

BOTTOMS





Name	Hemmed Skirt	Binded Skirt	Binded Skirt
SKU	722.6601H	722.6601B	722.6601R
Cut	Single-Side	Single-Side	Reversible
Inseam	Graded	Graded	Graded
Binding	None	Legs	Legs
Fabric	CPMtex, CPStex	CPMtex, CPStex	CPMtex, CPStex



Compression Short	Compression Short
1721.0301	1721.0501
Single-Side	Single-Side
3"	5"
None	None
CPStex	CPStex

TOPS



Name	Long Sleeve Compression	Short Sleeve Compression
SKU	1721.2901	1721.3001
Cut	Single-Side	Single-Side
Neck	V-Neck	V-Neck
Binding	Neck	Neck
Fabric	CPStex	CPStex

BRAS



Name	Sports Bra
SKU	1722.0501
Cut	Single-Side
Support	Medium
Binding	Neck, Arms
Fabric	CPStex

EXTRAS



Name	Loop Headband
SKU	731.0124
Cut	Single-Side
Sizes	One Size
Binding	None
Fabric	CPStex

ATHENA FIELD HOCKEY

Brute's Elite Fit for Women

52 BASELINE



COLORS

A

Scarlet

B

Black

C

White

57 STRIKE



COLORS

A

Columbia

B

Royal

C

White

213 SHATTER



COLORS

A

Kelly

B

Hunter

C

Super Lime

235 DEFENDER



COLORS

A

Black

B

Orange

C

Athletic Gold

WANT SOMETHING TRULY UNIQUE?
No problem! Contact your dealer with ideas and reference images of the design you want.

STYLES

Styles are stock artwork templates you can customize and apply to your uniform. Don't forget you can go fully custom, too! Our team of in-house artists is here to make your ideas a reality.

ATHENA FIELD HOCKEY

Your cut is your garment – the article of clothing on which Brute prints your custom artwork. Athena cuts range from youth sizes YXS-YL and adult sizes XS-4XL unless otherwise specified.

ATHENA VOLLEYBALL

Brute's Elite Fit for Women

TOPS



Name	Fitted Tech Tee	Loose Fit Tech Tee	Sleeveless Compression	Short Sleeve Compression
SKU	1622.0910	1625.0910	1621.2761	1621.3061
Cut	Single-Side		Single-Side	Single-Side
Neck	Scoop Neck		V-Neck	V-Neck
Binding	Neck		Neck	Neck
Fabric	CPMtex		CPStex	CPStex



Half Sleeve Compression	Long Sleeve Compression
1621.2861	1621.2961
Single-Side	Single-Side
V-Neck	V-Neck
Neck	Neck
CPStex	CPStex

BOTTOMS



Name	Compression Short	Compression Short
SKU	1621.0301	1621.0501
Cut	Single-Side	Single-Side
Inseam	3"	5"
Binding	None	None
Fabric	CPStex	CPStex

WARM-UPS



Name	Fitted Quarter-Zip	Loose Fit Quarter-Zip	Loose Fit Hoodie
SKU	1623.1102	1625.1102	1625.1101
Cut	Single-Side		Single-Side
Neck	Collared		Hooded
Binding	Wrist, Waist, Zipper		Wrists, Pocket, Waist
Fabric	CPStex		CPStex

STYLES

Styles are stock artwork templates you can customize and apply to your uniform. Don't forget you can go fully custom, too! Our team of in-house artists is here to make your ideas a reality.

ATHENA VOLLEYBALL

Brute's Elite Fit for Women

211 SPECTER



212 JOUST



216 RISE



217 FLARE



213 SHATTER



215 PLAYOFF



218 CUTSHOT



WANT SOMETHING TRULY UNIQUE?

No problem! Contact your dealer with ideas and reference images of the design you want.

Your cut is your garment – the article of clothing on which Brute prints your custom artwork. Brute cuts range from youth sizes YXS-YXL and adult sizes XS-4XL unless otherwise specified.

TOPS



Name	Long Sleeve Compression	Short Sleeve Comp.	Short Sleeve Flex	Short Sleeve Quarter-Zip
SKU	911.2901	911.3001	913.0910	915.8404
Cut	Single-Side	Single-Side	Single-Side	Single-Side
Neck	Crew	Crew	Collared	Collared
Binding	None	None	None	Zipper
Fabric	CPStex	CPStex	evoGame, FlexMesh MicroWic Lite, UltraLite	NeuMatch, ToughFlex, UltraLite

*Also available in:
slim fit - 916.0910

BOTTOMS



Name	Game Short	Training Short*	Game Short	Pocket Short
SKU	935.0301	913.0901	935.0801	935.0901
Cut	Single-Side	Single-Side	Single-Side	Single-Side
Inseam	3"	6"	6"	6"
Binding	None	None	None	None
Fabric	evoGame, MicroWic Lite, UltraLite	ToughFlex w/ FlexMesh	evoGame, MicroWic Lite, UltraLite	evoGame, MicroWic Lite, UltraLite

*Semi-Fit w/ Pockets



Long Sleeve Flex	Long Sleeve Quarter-Zip	Hoodie
913.0912	913.8401	914.3933
Single-Side	Single-Side	Single-Side
Collared	Collared	Hooded
None	Wrist, Waist, Zipper	Wrists, Pocket, Waist
evoGame, MicroWic Lite, UltraLite	NeuMatch, ToughFlex, UltraLite	NeuMatch

*Also available in:
slim fit - 916.0912



Game Short	Pocket Short	Game Short	Pocket Short	Sweatpant*
935.1001	935.1101	935.1201	935.1301	913.0500
Single-Side	Single-Side	Single-Side	Single-Side	Single-Side
7"	7"	9"	9"	Graded
None	None	None	None	None
evoGame, MicroWic Lite, UltraLite	evoGame, MicroWic Lite, UltraLite	evoGame, MicroWic Lite, UltraLite	evoGame, MicroWic Lite, UltraLite	Neumatch, UltraLite

*Also available in:
pockets - 913.0510

STYLES

Styles are stock artwork templates you can customize and apply to your uniform. Don't forget you can go fully custom, too! Our team of in-house artists is here to make your ideas a reality.

64 CHARGER



67 SURGE



88 QUICK



128 LOCKDOWN



130 SPLASH



158 GAUGE



WANT SOMETHING TRULY UNIQUE?

No problem! Contact your dealer with ideas and reference images of the design you want.

MEN'S TRAINING

Your cut is your garment – the article of clothing on which Brute prints your custom artwork. Athena cuts range from youth sizes YXS-YL and adult sizes XS-4XL unless otherwise specified.

TOPS



Name	Long Sleeve Compression*	Short Sleeve Compression*	Fitted Quarter-Zip	Loose Fit Quarter-Zip
SKU	921.2901	921.3001	1923.1102	1925.1102
Cut	Single-Side		Single-Side	
Neck	V-Neck		Collared	
Binding	Neck		Wrist, Waist, Zipper	
Fabric	CPStex		CPStex	

*Use Athena Wrestling size chart when determining size.

BOTTOMS



Name	Fitted Short	Loose Fit Short	Fitted Short	Loose Fit Short	Fitted Sweatpant*	Loose Fit Sweatpant*
SKU	1923.0304	1925.0304	1923.0306	1925.0306	1922.0311	1925.0311
Cut	Single-Side		Single-Side		Single-Side	
Inseam	4"		6"		Graded	
Binding	None		None		None	
Fabric	CPStex		CPStex		CPStex	

*Also available w/pockets:
Fitted - 1922.0321
Loose Fit - 1925.0321

ATHENA TRAINING

Brute's Elite Fit for Women



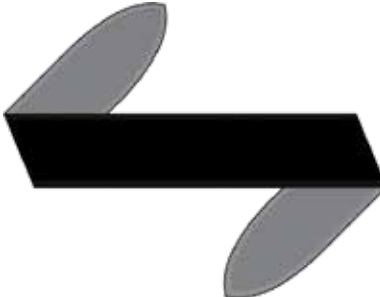
Shooting Shirt	Hooded Shooting Shirt	Loose Fit Hoodie
1925.0910	1925.0913	1925.1101
Single-Side	Single-Side	Single-Side
Collared	Hooded	Hooded
None	None	Wrists, Pocket, Waist
MicroWic Lite, UltraLite	MicroWic Lite, UltraLite	CPStex

BRAS



Name	Sports Bra
SKU	1922.0501
Cut	Single-Side
Support	Medium
Binding	Neck, Arms
Fabric	CPStex

EXTRAS



Name	Loop Headband	Tie Headband
SKU	931.0124	920.0101
Cut	Single-Side	Single-Side
Sizes	One Size	One Size
Binding	None	None
Fabric	CPStex	NeuMatch

STYLES

Styles are stock artwork templates you can customize and apply to your uniform. Don't forget you can go fully custom, too! Our team of in-house artists is here to make your ideas a reality.

64 CHARGER



67 SURGE



88 QUICK



128 LOCKDOWN



130 SPLASH



158 GAUGE



ATHENA TRAINING

Brute's Elite Fit for Women



WANT SOMETHING TRULY UNIQUE?

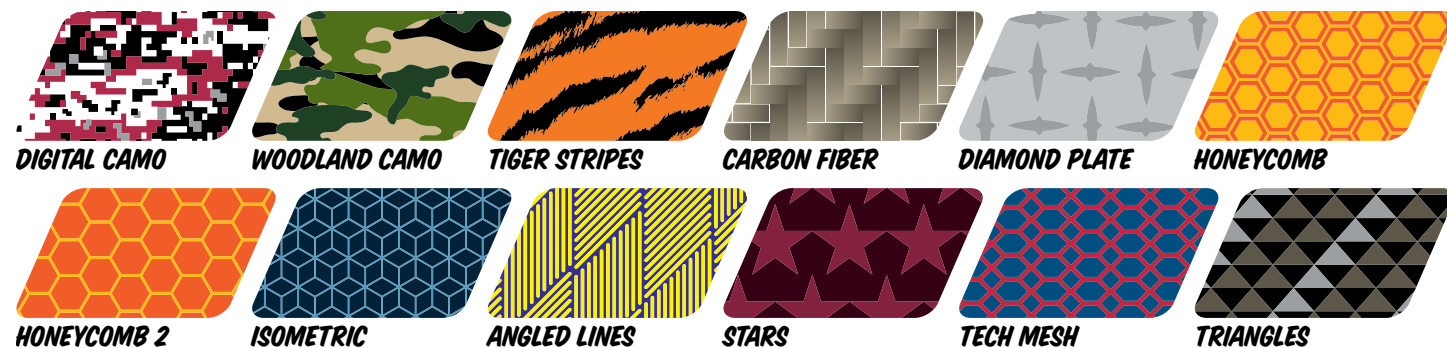
No problem! Contact your dealer with ideas and reference images of the design you want.

DETAILS

Design elements are the building blocks of your custom design: colors for print, thread, and binding; pattern options; fabrics; and fonts.

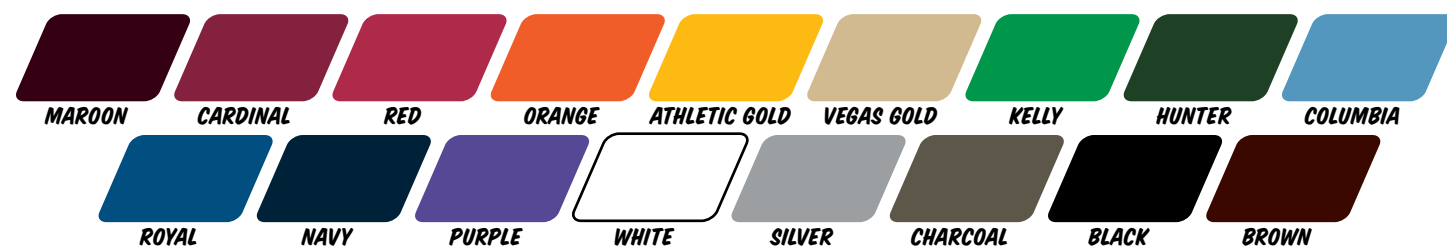
PATTERNS

Patterns are an easy way to add flair to your custom uniform. Our repeating patterns can be applied to any style in any combination of colors.



STANDARD COLORS*

Standard colors are tried-and-true basics. These colors are also available as thread and binding options.



EXTENDED COLORS*

Extended colors are bold, bright hues perfect for accents and special events. Not available as thread or binding options.



If you don't see what you're looking for, don't worry! We can match most Pantone PMS-C shades in-house on request. Once the match is made, we'll mail a swatch to your local Brute dealer for approval.

*These colors are meant to be a representation of our actual colors. Due to differences in the print and sublimation inks, colors may vary.

FONTS

A font helps accent the mood or theme of a design. Don't see what you're looking for? Let us know! We can use provided font files or match it to something similar.

VARSITY
 ABCDEFGHIJKLM
 NOPQRSTUVWXYZ
 0123456789

AACHEN
 ABCDEFGHIJKLM
 NOPQRSTUVWXYZ
 0123456789

BRUSH SCRIPT
 ABCDEFGHIJKLM
 NOPQRSTUVWXYZ
 0123456789

IMPACT
 ABCDEFGHIJKLM
 NOPQRSTUVWXYZ
 0123456789

HOUSE OF CARDS
 ABCDEFGHIJKLM
 NOPQRSTUVWXYZ
 0123456789

SERPENTINE
 ABCDEFGHIJKLM
 NOPQRSTUVWXYZ
 0123456789

AGENCY
 ABCDEFGHIJKLM
 NOPQRSTUVWXYZ
 0123456789

FABRIC

Our superior craftsmanship starts with field-tested polyester and poly-Lycra blends. We guarantee flexibility, durability, and reliable moisture-wicking across all fabric options, regardless of weight or sport.

CPMtex

80% poly / 20% Spandex 6.78 oz.
 Ultra-soft 4-way stretch poly blend ideal for both fitted and loose fit apparel.

CPStex

82% poly / 18% Lycra 8.80 oz.
 4-way stretch poly blend ideal for wrestling singlets and contact-safe compression gear.

DuraGame

100% poly 8.80 oz.
 Durable game weight ponte poly ideal for full-contact uniforms.

evoGame

100% poly 8.08 oz.
 Versatile game weight performance poly featuring mock mesh on one side and micro-face on the other. Ideal for single-sided and reversible uniforms.

FlexMesh

92% poly / 8% Spandex 6.35 oz.
 Lightweight 4-way stretch pinhole mesh ideal for all contact and warm weather sports.

MicroWic Lite

100% poly 4.30 oz.
 Lightweight performance poly ideal for low-contact and warm weather sports.

MicroWic Game

100% poly 5.80 oz.
 Game weight alternative to MicroWic Lite ideal for moderate contact and warm weather uniforms.

NeuMatch

100% poly 9.10 oz.
 Standard heavyweight poly ideal for warm-ups and pullovers.

ToughFlex

100% poly 5 oz.
 Lightweight woven poly ideal for NFHS-legal semi-fit wrestling shorts.

UltraLite

100% poly 4 oz.
 Ultra-lightweight performance poly ideal for light training gear as well as low-contact and warm weather uniforms.

LET'S REVIEW

Review the bulleted list to ensure you have everything you need to place your order.

- Required Info:

 - Sport
 - Cut
 - Style
 - A, B, C, D Colors
 - Thread color
 - Trim color (if applicable)
- Additional Info:

 - Text placements, fonts, and colors
 - Logo placements and colors
 - Fabric choice
 - Sizes and quantity

Our products are sold exclusively through team sports stores in the US and Canada. They will guide you through each step of the ordering process, from pricing to artwork requests to order submission. If you need help locating a store in your state or province or have any questions, please contact Customer Service at sales@brute.com or call 800.486.2788.

WHAT HAPPENS NOW?

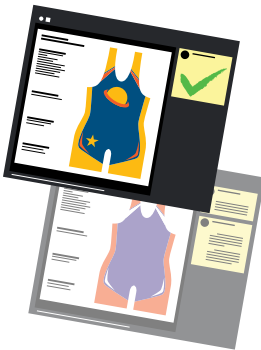
1. CONTACT

Your dealer will contact Brute and relay your information.



2. APPROVAL

Next, you will receive a digital mock-up of your order. You can review and revise the artwork to your satisfaction.



3. DELIVERY

With your approval, Brute will get to work fulfilling your order and shipping it within the promised delivery date!



BRUTE

SIZE CHART

Sizing information for Brute's standard male and female apparel.

BOYS										MEN													
SIZE	YXS		YS		YM		YL		YXL	XS	S		M		L		XL	2XL		3XL		4XL	
CHEST	25.5	26	26	27	27	29.5	29.5	31	32	33.5	35	37.5	37.5	41	41	44	44	48.5	53.5	53.5	58	58	63
WAIST	23.5	24	24	25.5	25.5	27	27	28.5	28.5	29	29	32	32	35	35	38	38	43	47.5	47.5	52.5	52.5	57
HIP	27	28	28	29.5	29.5	31.5	31.5	33.5	33.5	35	35	37.5	37.5	41	41	44	44	47	50.5	50.5	53.5	53.5	57
LBS	40	60	60	80	80	90	90	110	110	130	130	150	150	170	170	190	190	210	240	240	270	270	+

Athena

SIZE CHART

Sizing information for Brute's new Athena line. Athena emphasizes unique fits and comfort for female athletes.

GIRLS								WOMEN																
SIZE	YXS		YS		YM		YL	XS		S		M		L		XL		2XL		3XL		4XL		
CHEST	24	26	26	28	28	30	30	32	30	32	33	35	36	38	39	41	42	44	45	47	48	50	51	53
WAIST	22	24	24	26	26	28	28	30	24	26	27	29	30	32	33	35	36	38	39	41	42	44	45	47
HIP	26	28	28	30	30	32	32	33	33	35	36	38	39	41	42	44	45	47	48	50	51	53	54	56

Athena WRESTLING

SIZE CHART

Sizing information specifically for Athena Wrestling found on pages 20-25.

GIRLS										WOMEN																
SIZE	YXS		YS		YM		YL		YXL		XS		S		M		L		XL		2XL		3XL		4XL	
CHEST	25.5	27	27	29	29	31	31	33.5	33.5	36.5	29.5	32.5	32.5	35.5	35.5	38	38	41	41	44.5	44.5	48.5	52.5	52.5	57	
WAIST	23.5	24	24	25	25	27	27	28	28	29.5	23.5	26	26	29	29	32	32	35	35	38.5	38.5	42.5	46.5	46.5	51	
HIP	27	29	29	31	31	33	33	35	35	37	33	35.5	35.5	38.5	38.5	41	41	44	44	47	47	50	54	54	58	
LBS	40	60	60	80	80	90	90	110	110	130	90	110	110	130	130	150	150	170	170	190	190	210	240	240	+	

GOLF TOWELS

SCARVES

BEACH TOWELS

PROMOTIONAL ITEMS NOW AVAILABLE

TABLE COVERS

BLANKETS

FAQs

Got a question? We have an answer. If you don't see what you're looking for, you can contact our Customer Service department at 1-800-486-2788 or sales@brute.com.

I work with a school/organization/rec league. How do I get pricing and place an order?

Brute products are sold exclusively through team sports stores in the US and Canada. They'll guide you through each step of the ordering process, from pricing to artwork requests to order submission.

If you need help locating a store in your state or province, please contact Customer Service.

What's your standard turnaround for artwork? What about production?

Once we confirm the details of your design, we'll provide a mock-up in 3 business days or less. When art is approved and we have everything needed to send an order to production, it will ship in 15 to 20 business days unless quoted otherwise.

Do you have a rush program?

We do. Please check with your local vendor for Fast Track availability.

What should my artwork request include? Where can I send it?

At minimum, you should include the following:

- Cut: the type of garment you want – a men's basketball jersey, for example.
- Style: what you want the garment to look like. This might refer to one of our template styles – the 165/Fastbreak, for example – or a cool design you found online. If the latter, please provide some reference images!
- Colors: we recommend two to three primary colors.
- Logos and mascots: choose one of ours or send your own in an AI, EPS, or PDF vector file.
- Text and logo placement: the specific location and orientation for text, logos, and mascots.

Please submit your concept to your preferred dealer and they'll submit it to us in an official mock-up request.

I don't have my logo in vector format; can you recreate it?

We can trace or recreate large, high-resolution PDFs, JPGs, or PNGs. If you don't have a digital version of your logo, please provide a clear, large photograph of your logo or mascot and we will let you know whether we can recreate it by hand.

Do I have to use one of Brute's art styles?

No! We have an outstanding in-house team of artists capable of producing custom designs as unique as your team. Include some reference images and ideas with your request and we'll make them a reality.

Do you offer any stock mascots?

Yes! Our Customer Service team can provide PDFs on request.

What is your minimum order quantity for new orders? What about fill-ins?

New orders must include at least 6 pieces per item. Please note that men's and women's cuts are separate items, even if they share artwork; in this case, only 6 pieces of one or the other are required.

There are no minimums for fill-ins.

Do you offer samples or size kits?

Samples and size kits are available for a limited selection of cuts. Please contact our Customer Service department for more information.

I ordered a uniform from Brute a few years ago and need some fill-ins. Can you locate the original order?

As long as you have one of the original pieces, yes! Each garment we produce has a job number printed on it or the tag inside it. We can search for these numbers internally to locate past orders.

- **Older single-sided garments:** printed on the paper tag sewn inside along one of the seams.
- **Older reversible garments:** sublimated directly on the garment with the sizing and washing information.
- **Newer single-sided garments:** sublimated directly on the garment along one of the bottom hems.
- **Newer wrestling singlets:** sublimated directly on the garment along the inner thigh seam.
- **Newer reversible garments:** sublimated directly on the garment with the sizing and washing information; on shorts, they are printed along the inner thigh seams.

I ordered a classic Brute women's uniform in the past and am looking to fill in a few pieces. Do I have to redesign it using the Athena line's cuts and fits?

If you need to reorder a Brute women's design, you can do so without making the transition to our elite line.

Do you accept returns?

We accept certain requests to return products within 30 days of receipt. Please contact your vendor for details.

Do you accept cancellations?

Once a Customer Service representative confirms your order is in production, we can't cancel or change it. If you need to add pieces, we will process them as a separate order.

How do I care for my sublimated uniform?

Machine wash separately with cold water. Do not bleach. Remove from washer promptly. Either tumble dry on no heat or line dry. Do not use fabric softener. Do not iron.

When washing, avoid detergents that include phosphates to prevent sublimated dyes from bleeding. Keep sublimated garments away from Velcro, denim, and other coarse fabrics to prevent pulls and snags.



800-486-2788

sales@brute.com

www.brute.com